



ELROSE SEMEN RELEASE



Rodger & Lorena Jefferis Grant & Brooke Jefferis:

Elrose PO Box 9 Cloncurry QLD Australia 4824


Ph +61 7 4746 8467 Fax +61 7 4746 8794

Email: elrose1@bigpond.com



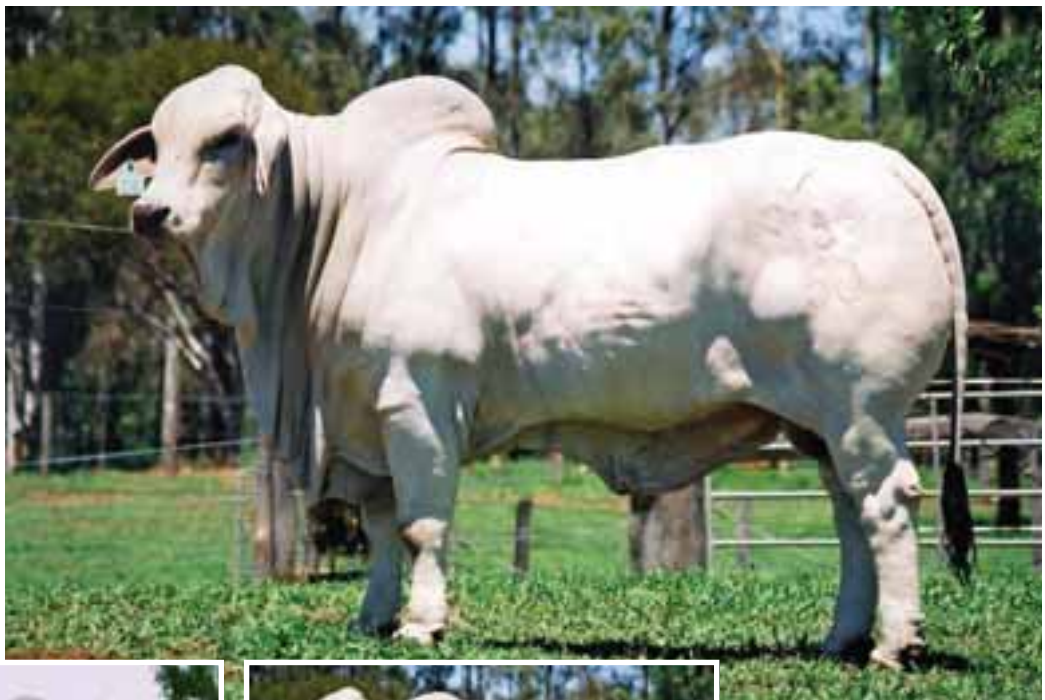
LANCEFIELD AMBITION 7736

S. JDH Manso Grande 488
 S. JDH A Dakota Manso
SIRE: JDH BRISCOE MANSO (IMP)
 D. JDH Lady Shano Manso
 S. JDH Sir Estho Manso
 D. JDH Lady Rubbi Manso
 D. JDH Miss Rubby De Manso
 S. JDH Manso Grande 412
 S. JDH Sir Grande Manso 187 (Imp)
DAM: LANCEFIELD EMPRESS 5173
 D. JDH Lady Bren Manso 506/3
 S. CMT Jarocho 309/0 (Imp)
 D. Lancefield Indu Empress 2208
 D. Lancefield 910

 BRAHMAN GROUP BREEDPLAN	200 Day Growth	400 Day Growth	600 Day Growth	C Wt
	+31 96%	+38 95%	+59 95%	+36 88%

- Breed Trait Leader - Milk, 200 Day, 400 Day, 600 Day Weight
- Highly Fertile & Virile
- Power packs his progeny

**INTERNATIONAL
SALES ONLY**



Sons of
Lancefield
Signature



LANCEFIELD SIGNATURE 9153

S. WR Mr Suva 203

S. 3B Mr Suva

D. LMT Miss Diamond T206

SIRE: DR MR INTERNATIONAL 50/1 (IMP)

S. Mr V8 15/3

D. Miss V8 5/4

D. Miss V8 711/2

S. JDH Lonnie Joe Manso 511/7

S. JDH Mr Manso 855/8 (Imp)


D. JDH Miss Dorian Manso 72

DAM: LANCEFIELD MERYL MANSO 494

S. JDH Remington Manso 924 (Imp)

D. Lancefield Meryl Manso 191

D. Lancefield Ms Rem Manso 046

	200 Day Growth	400 Day Growth	600 Day Growth	C Wt
		+21 86%	+32 82%	+42 78%


- Cost an Australian Record \$87,500 in 2001
- Remarkably consistent sire of market appeal
Progeny – Long, clean, stylish, breed and beef quality
- Sale sons in demand by leading studmasters
- Super pedigree backing
- Sire of Australia's top selling Brahman bull in 2005.

ELROSE SIGNIFICANCE



Sire: Lancefield Significant 9159

Dam: Elrose Awesome

	200 Day Growth	400 Day Growth	600 Day Growth	C Wt
		+37 68%	+49 64%	+67 68%


- Exciting potential judging by his first calves

ELROSE COMMITMENT



Sire: Lancefield Ambition 7736

Dam: Elrose 1626

	200 Day Growth	400 Day Growth	600 Day Growth	C Wt
		+20 76%	+16 77%	+23 76%


- Natural, easy doing, optimum beef calves

ELROSE MIRACLE MAN



Sire: JDH Madison Man Manso (Imp)

Dam: Elrose Neomi 6th

	200 Day Growth	400 Day Growth	600 Day Growth	C Wt
		+37 71%	+43 67%	+64 70%


- Performance & Pedigree Plus

ELROSE MALE MODEL (POLL)



Sire: Lancefield Magic Manso 8954

Dam: Elrose Model 2nd

	200 Day Growth	400 Day Growth	600 Day Growth	C Wt
		+25 69%	+29 61%	+36 59%


- Performance Champion Bull Beef 2003

TARTRUS CUSTOM MADE



Sire: Mr V8 846/3 (Imp)

Dam: Tartrus Lady Rem Manso 030

	200 Day Growth	400 Day Growth	600 Day Growth	C Wt
		+16 93%	+25 92%	+30 92%

- Carcase quality and beef type consistency